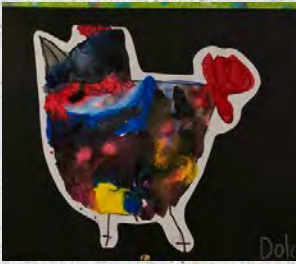


Term 2 Week 7 2023



# Ben Lomond Public School Newsletter

## Our works of Art



**Respect, Responsibility, Leadership, Resilience**

588 Inn Road  
Ben Lomond NSW 2365  
Phone: 02 6733 2001

Email: [benlomond-p.school@det.nsw.edu.au](mailto:benlomond-p.school@det.nsw.edu.au)  
Website: [benlomond-p.schools.nsw.edu.au](http://benlomond-p.schools.nsw.edu.au)



Education

A PROUD MEMBER OF THE

**SNOW GUMS**  
LEARNING ALLIANCE





## Relieving Principals report

These last two weeks has been fun filled and busy for both staff and students. We are lucky to have Ms Stewart back in the office after her holiday and we have celebrated National Simultaneous Story Day, had Backtrack visit and learnt about significant Australian historical events, as well as our normal lessons.

Last week was Reconciliation Week and that kicked off on Friday 26 May with National Sorry Day. We started with learning about how that day was established, why Prime Minister Kevin Rudd issued a formal apology in 2008 and completed some artworks inspired by the First Nations People of Australia. In addition to these activities, we learnt that National Reconciliation Week is a time for all Australians to learn about our shared histories, cultures, and achievements, and to explore how each of us can contribute to achieving reconciliation in Australia.

On Tuesday 30 May, Year 4 completed the Check-in assessments for reading and numeracy. Each assessment is designed to be quick and easy to administer, consisting of between 40 to 50 multiple choice questions. Both Nafeth and Jack should be proud of their achievements in this standardised national assessment. These results will be used to guide 'where to next' in the classroom and will be reflected in their reports at the end of the term. However, if parents/carers would like more information please contact the school and I will be happy to go through the results with parents/carers.

Miss Cullen and Miss Barnes have been involved in some professional learning over the last few weeks. They attended a two-day conference called Positive Partnerships. This professional learning is about creating autism friendly schools helps create more inclusive learning environments in which all students succeed and flourish. In addition to this, Miss Barnes has attended Emmaville Central School to work collaboratively with their K-2 teacher to ensure the most effective and current practices in delivering the New Curriculum are being implemented here at BLPS. Emmaville Central School was an Accelerated Adopter school and had been involved in the implementation of the new syllabus and the creation of the new units of work in 2022.

Now it is officially winter I would like to remind people to wear jackets and jumpers to school every day. It is important that we stay warm and ensure that we can take layers off to work in the warm classrooms and adjust as the days progress. In addition to jumpers, we need to remember to pack water bottles and hats. Even though it is cold we need to remain hydrated and protected from the sun.

Elizabeth Opie  
Relieving Principal



# National Simultaneous Story time





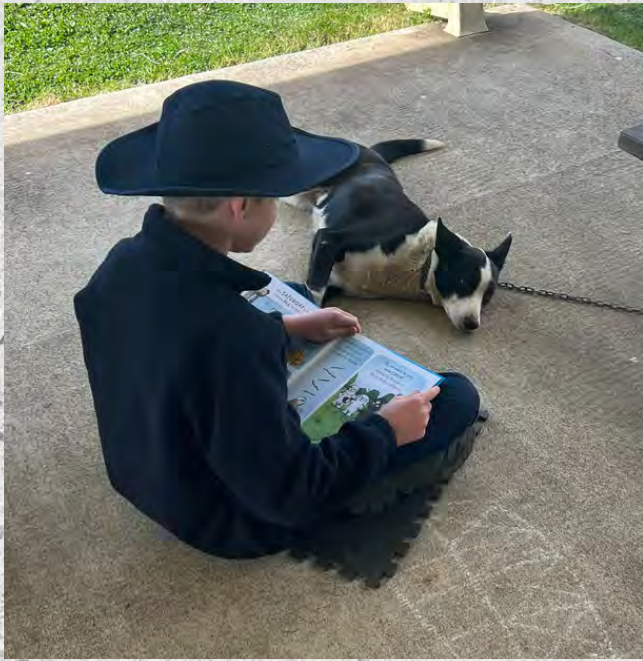
# Finlaysons Athletics Carnival







# BACKTRACK





# DATES FOR YOUR DIARY

## June

Friday 9th - Hockey and Band

Monday 12th - Kings Birthday holiday

Friday 16th - Hockey and Band

Friday 23rd - Hockey, Band and Backtrack

Tuesday 27th June - Reports sent home

Tuesday 27th June - Assembly 2pm

Friday 30th - Hockey and Band

Friday 30th Last day of Term

## July

Monday 17th - Staff return

Tuesday 18th - Children return

## REMINDER

PERMISSION NOTES ARE DUE BACK

Great Aussie Bush camp  
notes.

Please check for Library  
books and return to  
school.

Thank you



## Choose Water



You wouldn't eat 16 teaspoons  
of sugar - *so why drink it?*



600ml cola	500ml iced tea	600ml sports drink	250ml energy drink	600ml lemon squash	1100ml slushy	250ml natural fruit juice	600ml water
16	8	9	7	16	25	6	0
teaspoons sugar per bottle	teaspoons sugar per bottle	teaspoons sugar per bottle	teaspoons sugar per can	teaspoons sugar per bottle	teaspoons sugar per cup	teaspoons sugar per bottle	teaspoons sugar per bottle